

DATE: \_\_\_\_\_  
 COMPANY NAME: \_\_\_\_\_  
 CONTACT PERSON: \_\_\_\_\_  
 PHONE: \_\_\_\_\_  
 PROJECT/SITE: \_\_\_\_\_  
 PURCHASE ORDER NO: \_\_\_\_\_  
 DOOR NO: \_\_\_\_\_

**RIVERS SINGLE LEAF SECURITY DOOR UNIT - ORDER DETAIL SHEET**

OPEN IN DOOR

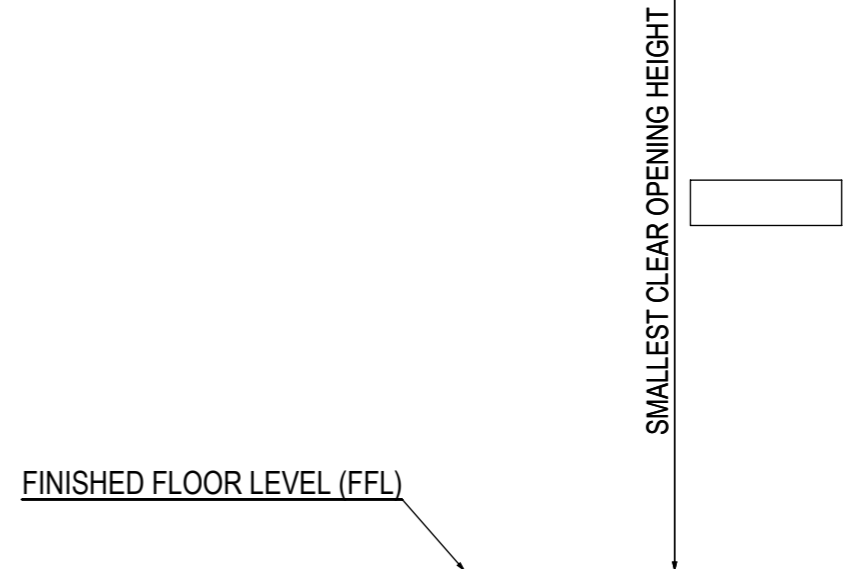
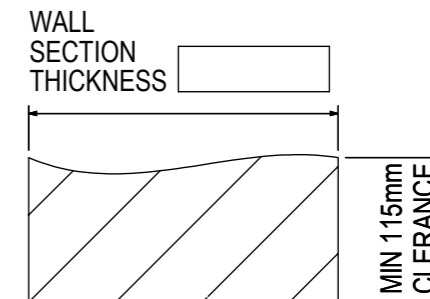
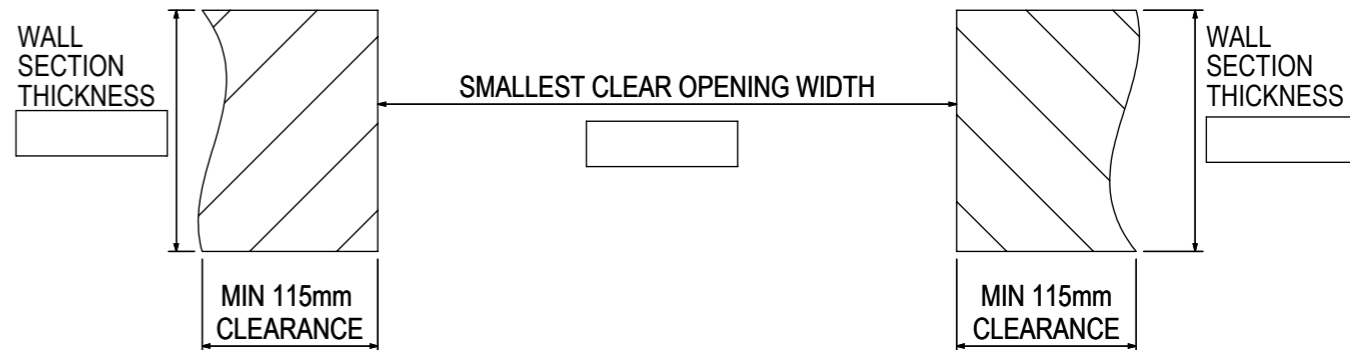
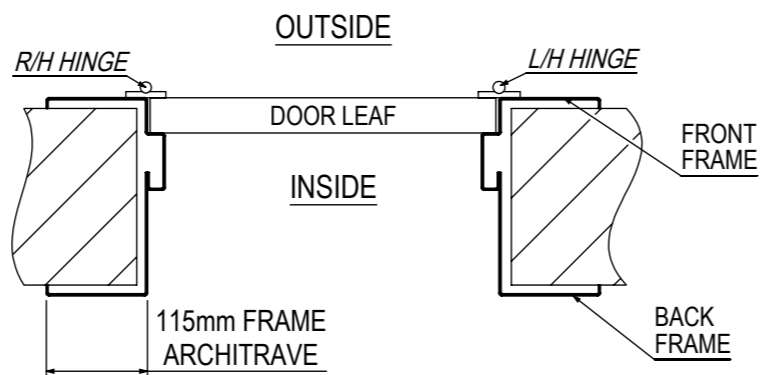
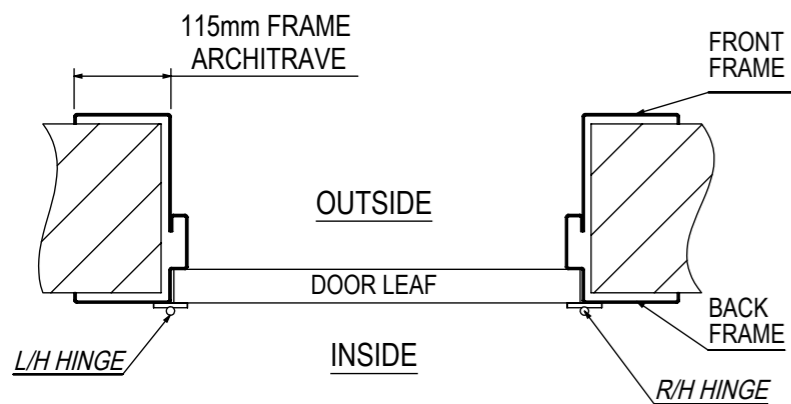
OPEN OUT DOOR

L/H HINGE

R/H HINGE

R/H HINGE

L/H HINGE



DOOR LEAF TYPE	×	PAN SHEETING	×
EXTERIOR PAN SHEETED ONLY - SOLID CORE		DRILL RESISTANT STEEL	
PAN SHEETED BOTH SIDES - SOLID CORE		1.6mm MILD STEEL	

**LOCKS REQUIRED**

MODEL 'D' 2 POINT SERIES	×	4 POINT SERIES	×	VERTICAL 2 POINT SERIES	×	MODEL 'F' 4 POINT SERIES	×
S1		410 LOCK		S1		S1	
S2		420 LOCK		S2		S2	
S3				S3		S3	
S4						S4	
S4 KL						S4 KL	
S5						S6	
S6							

KL: KEY & LEVER LOCK

RIVERS OFFICE ONLY -  
JOB NO: \_\_\_\_\_